

Universal Network Management Controller with LCD Touch Screen (10"/12")



Universal Network Management Controller with LCD Touch Screen

PLANET's NMS-1000V Network Management controller can directly monitor all kinds of deployed network devices without having to use an extra computer. However, the deployed devices, such as managed switches, media converters, routers, smart APs, VoIP phones, IP cameras, etc., have to be compliant with the **SNMP** Protocol, **ONVIF** Protocol and **PLANET Smart Discovery** utility. It thus enables the administrator to centrally manage a network of **up to 1024** nodes from a central office, greatly boosting network and power management efficiency. Through the intuitive touch panel, any network exception messages can be displayed in real time to greatly improve the work efficiency of network management personnel. With its user authentication management, the NMS-1000V enhances data transmission security in the modern factory automation systems.



Watch Over Network within Minutes

The domain information web page presents a managed devices list and topology view, providing the at-a-glance and efficient summary of your management network. It lets you have a valuable information on the current wired and wireless network statuses via data-driven graphical charts. The topology viewer and event reports enable you to visualize the system usage and node status in real time so as to address whatever issue they may have.

Industrial-grade Physical Hardware

- 2x10/100/1000BASE-T Gigabit Ethernet RJ45 ports
- 2xUSB 3.0 ports for configuration backup and restoration
- 1xaudio line out (reserve)
- 1xHDMI interface
- 2xDB-9 COM1,COM2 (reserve)
- 1x3-pin DC power input terminal
- 1x2-pin connector for power on/off button (reserve)
- VESA (100 x 100) panel mount

Network Devices Management

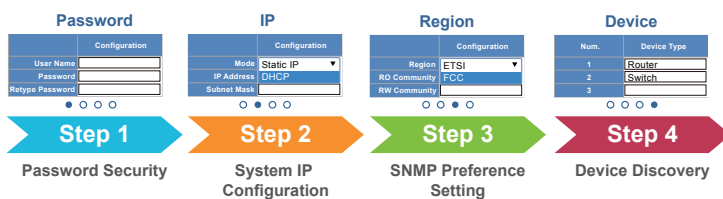
- **Dashboard:** Providing the at-a-glance view of system, device summary, traffic, PoE network status
- **Setup Wizard:** Easy to use step-by-step guidance
- **Node Discovery:** To detect PLANET managed devices available and allow AP grouping to accelerate AP management
- **Topology Viewer:** A topology of network devices compliant with SNMP, ONVIF, Smart Discovery and LLTD Protocol
- **Event Reports:** The status of a network can be reported via network alarm, system log
- **Alarm System:** Popup alerts and email alerts for the administrator via the SMTP server
- **Batch Provisioning:** Enabling multiple APs to be configured and upgraded at one time by using the designated profil.
- **Coverage Heat Map:** Real-time signal coverage of APs on the user-defined floor map to optimize Wi-Fi field deployment
- **Customized Profile:** Allowing the creation and maintenance of multiple wireless profiles
- **Auto Provision:** Multi-AP provisioning with one click
- **Cluster Management:** Simplifying high-density AP management
- **Zone Plan:** Optimizing AP deployment with actual signal coverage



User-friendly Setup Wizard

The NMS-1000V enhances user experience by providing more user-friendly wizard and obvious step-by-step guidance on each related function. Just like an app, it reduces training time and allows even non-technical users to be able to set up management network system within minutes.

Wizard Setup



Interactive Dashboard Shows Network Statuses in an Instant

The NMS-1000V's interactive dashboard includes local site network router, switch, access point statistics and WAN Traffic/PoE history graph. The administrator can quickly overview the device statuses as to whether or not they are online or offline. Through alert pop message window he can also find out system event on the touch panel, thus immediately knowing where the disconnection issue comes from.



- **Authentication:** Built-in RADIUS server seamlessly integrated into the enterprise network
- **User Control:** Allowing on-demand account creation and user-defined access policy
- **Scalability:** Free system upgrade and AP firmware bulk upgrade capability
- **Maximum Scalability:** 50 floor maps, 1024 nodes, 128 AP groups, 128 SSID profiles, 1024 managed APs, 20,000 clients, 20,000 RADIUS user accounts, 50 RADIUS user groups and 1024 RADIUS clients.

Network Management Characteristics

- Built-in DHCP Server
- Built-in RADIUS Server
- SSL secure access
- Web-based GUI management interface
- SNMP v1, v2c, and v3 management
- Supports PLANET DDNS/Easy DDNS

Real-time Centralized Monitoring with Pop-up Alerts and E-mail Alarm Function

As the NMS-1000V can come out with a topology view of the network of the deployed powered devices, it enables to detect which device is online (Green) or offline (Red). The real-time centralized monitoring of these devices can help the administrator know what the current statuses of these devices are. Pop-up alerts shown on the touch panel tell where the problems are. The e-mail alarm function is designed to send an email alert to the administrator via the SMTP server where syslog information can be found once an abnormality is detected. This can prompt the administrator to quickly fix the identified problem in the network.



Optimizing Wi-Fi Deployment with Floor Maps

With the floor maps, devices can be located according to the field deployment, thus saving your time and cost of on-site support and monitoring. The current statuses of devices are shown in real time and the heat map is able to show the wireless signal coverage and strength to help the administrator fine-tune the overlapping of the adjacent devices anytime to optimize the wireless network performance.



HDMI Screen Synchronization Projection and Remote Login

The NMS-1000V supports HDMI interface that can easily connect to another bigger size screen, so that user can easily monitor the network more clearly. You can also use your other PC, laptop or tablet to monitor managed nodes on a DHCP-enabled network via Web browser, thus enabling you to manage the network anytime, anywhere.

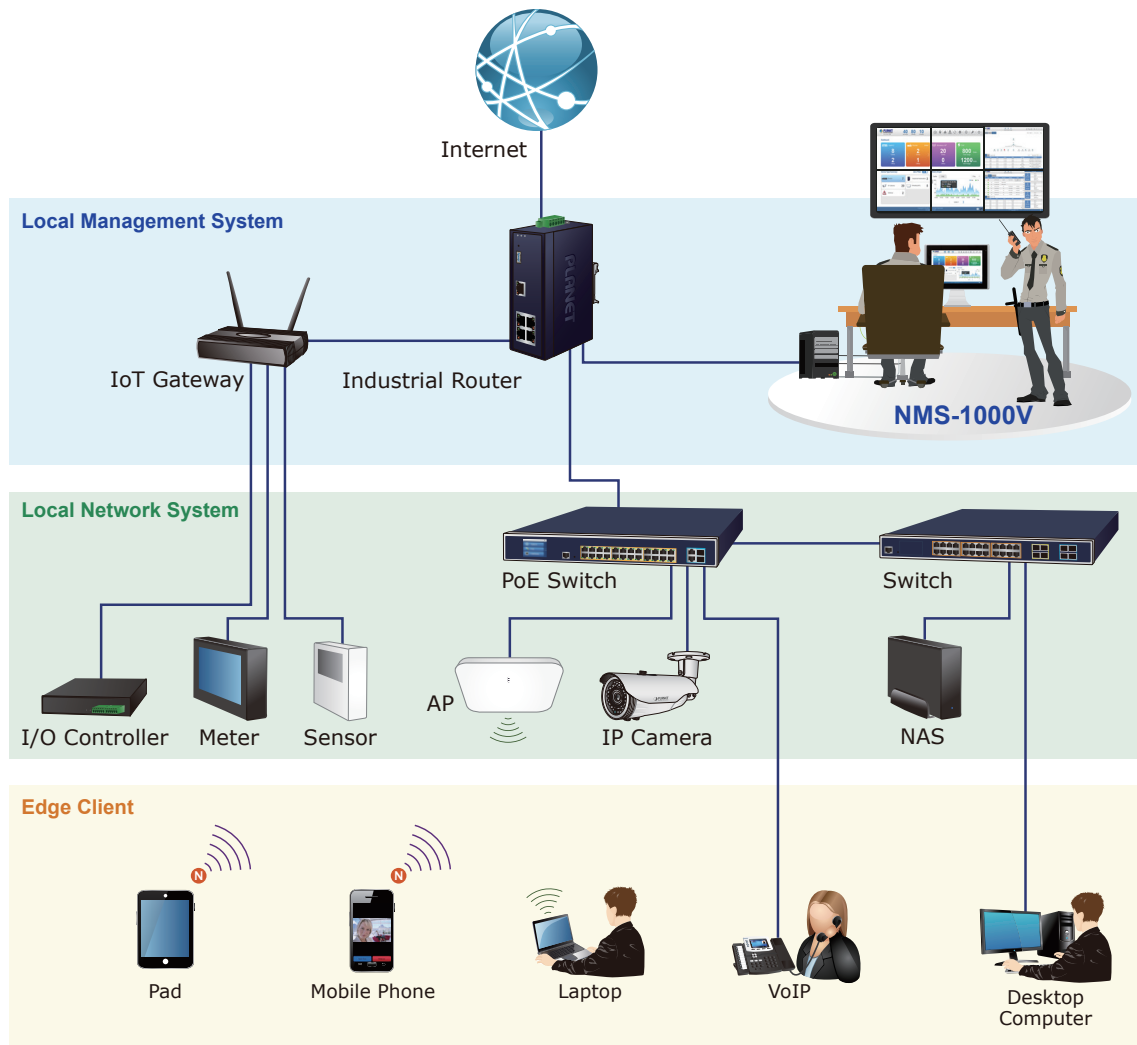


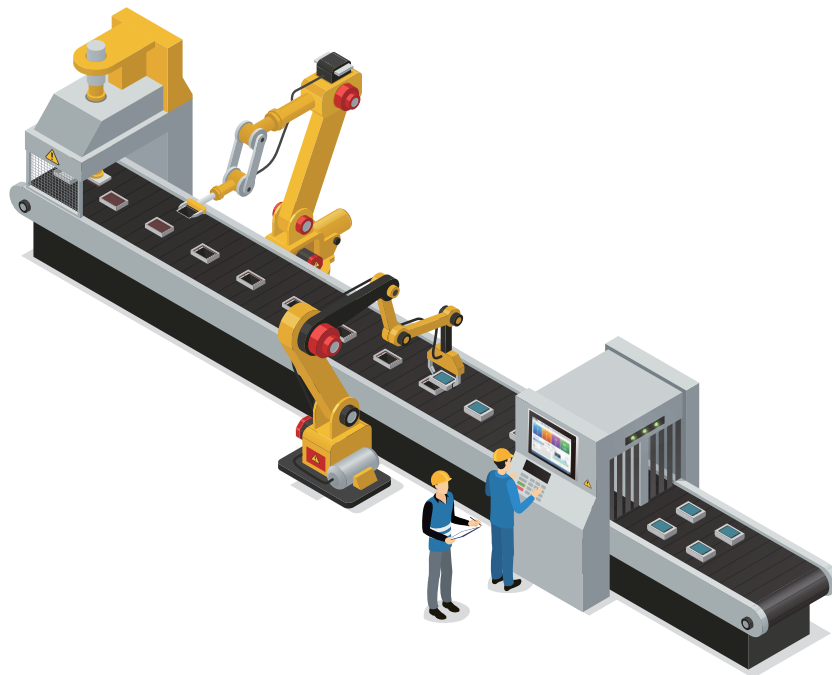
Applications

Economical Central Network Management Solution for SMBs

PLANET NMS-1000V helps service providers and IT managers control all PLANET network devices at the same time and enables administrator to effectively manage a local network of up to 1024 managed nodes simultaneously without having to purchase any license and hardware-based controller, and pay an expensive annual subscription fee.

The administrator can automatically discover and configure device profiles, batch provisioning/firmware upgrade, and built-in SAPC (Smart AP Control) that customize Wi-Fi planning against floor maps, and monitor all managed APs through a single Web-based interface. It allows operating across different platforms through virtualization software, which helps SMBs save costs on the need to configure the wireless APs one by one if done manually.





[Remarks]

Router: Log in to the router's Web user interface and **enable the SNMP** function.

Switch: Log in to the switch's Web user interface and **enable the SNMP and LLDP** function.

AP: Log in to the AP's Web user interface to **configure the AP to "Managed AP"**. In support of SNMP AP, **enable the SNMP** function.

IP Cam: The **ONVIF** function is enabled by default.

Specifications

| Product | NMS-1000V-12 | NMS-1000V-10 |
|--|---|------------------------|
| Form Factor | Panel Mount, VESA 100 x 100 | |
| Hardware Specifications | | |
| I/O Interface | 2 10/100/1000BASE-T Gigabit Ethernet RJ45 ports | |
| | 2 USB 3.0 ports (They cannot be used at the same time.) | |
| | 1 Audio Line Out (reserve) | |
| | 1 HDMI interface | |
| | 2 DB-9 COM1,COM2 (reserve) | |
| | 1 3-pin DC power input terminal | |
| | 1 2-pin connector for power on/off button (reserve) | |
| Storage | 2.5" 32G SATA3 HDD | |
| Touch LCD Size | 12.1" TFT-LCD | 10.1" TFT-LCD |
| Touch Type | Resistive Touch Window | |
| | Projected Capacitive Touch | |
| Display Resolution | 1024 x 768 | 1280 x 800 |
| Display Luminance(cd/m ²) | 500 | 350 |
| Display Viewangle(H°/V°) | 160(H)/140(V) | 160(H)/160(V) |
| Display Contrast | 700:1 | 800:1 |
| Display Backlight lifetime(hrs) | 30,000 hrs | 40,000 hrs |
| Light Transmission (%) | Resistive Touch Window: over 80% | |
| | Projected Capacitive Touch: over 90% | |
| Dimensions (W x D x H) | 12": 319 x 51.7 x 245 mm | 10": 285 x 49 x 189 mm |
| Weight | 12": 2.9 kg | 10": 2 kg |
| Enclosure | Aluminum Die-casting Chassis | |
| Power Requirements | DC IN 9~36V | |
| | 60W adapter 12V 5A with terminal block AC 100~240V, 2.0A, 60~50Hz. | |
| Environment & Certification | | |
| IP rating | IP66 Compliant Front Bezel | |
| Temperature | Operating: 0 ~ 50 degrees C | |
| | Storage: -30 ~ 70 degrees C | |

| | | |
|---------------------------------|---|---|
| Humidity | 10 ~ 90% relative humidity (non-condensing) | |
| MTBF (Hours) | 100,000 | |
| Network Management | | |
| Number of Managed Devices | 1,024 | |
| Number of RADIUS Client Devices | 1,024 | |
| Number of RADIUS User Accounts | 20,000 | |
| Auto Discovery | Supports PLANET devices | |
| Dashboard | Providing the at-a-glance view of system, device summary, traffic, PoE network status | |
| Device List | Allows creation and maintenance of device profiles | |
| Topology View | Provides visual topology view of connected PLANET devices | |
| Status Monitoring | Real-time online/offline devices | |
| Event and Syslog Report | Real-time system event and syslog server supported | |
| Event Alarm Define | Allows event alarm item option | |
| SMTP Alarm | E-mail alert to the administrator via the SMTP server | |
| Popup Alert Message Window | Touch screen exclusive alert message window | |
| SSID/RF Profile | Allows creation and maintenance of multiple wireless profiles | |
| Cluster Management | Allows AP grouping for bulk provisioning and batch upgrading | |
| Bulk AP Provisioning | Supports bulk AP provisioning with user-defined profiles | |
| Bulk AP Firmware Upgrade | Supports bulk AP firmware upgrade | |
| Coverage Heat Map | Enables real signal coverage of managed AP reflecting on the uploaded zone maps | |
| Graphical Statistics | Real-time and historical visibility of wireless traffic flow | |
| Backup/Restoration | Provides system and profile backup/restoration | |
| SSIDs-to-VLANs Mapping | Allows to configure SSIDs-to-VLANs mapping in supported APs | |
| RADIUS Authentication | RADIUS server is integrated for client authentication in a large-scale enterprise network | |
| User Account Management | Supports on-demand account creation per user-defined access policy | |
| Network Services | | |
| Network | DDNS | Supports PLANET DDNS/Easy DDNS |
| | DHCP | Built-in DHCP Server for auto IP assignment to APs |
| | Management | Console; Telnet; SSL; Web browser (Chrome is recommended); SNMP v1, v2c, v3 |
| | Discovery | Supports SNMP, ONVIF and PLANET Smart Discovery |
| Maintenance | Backup | System backup and restore to local or USB HDD |
| | Reboot | Provides system reboot manually or automatically per power schedule |
| | Diagnostic | Provides IPv4/IPv6 ping and trace route |
| Standards Conformance | | |
| Regulatory Compliance | CE, FCC | |
| Standards Compliance | IEEE 802.3 10BASE-T | |
| | IEEE 802.3u 100BASE-TX | |
| | IEEE 802.3ab Gigabit 1000BASE-T | |

Ordering Information

| | |
|--------------|---|
| NMS-1000V-10 | Universal Network Management Controller with 10" LCD Touch Screen |
| NMS-1000V-12 | Universal Network Management Controller with 12" LCD Touch Screen |

PLANET Technology Corporation

11F., No.96, Minquan Rd., Xindian Dist., New Taipei City 231,
Taiwan (R.O.C.)
Tel: 886-2-2219-9518 Fax: 886-2-2219-9528
Email: sales@planet.com.tw www.planet.com.tw



PLANET reserves the right to change specifications without prior notice. All brand names and trademarks are property of their respective owners. Copyright © 2020 PLANET Technology Corp. All rights reserved.

NMS-1000V